

LAST ROOMS AVAILABLE

Location

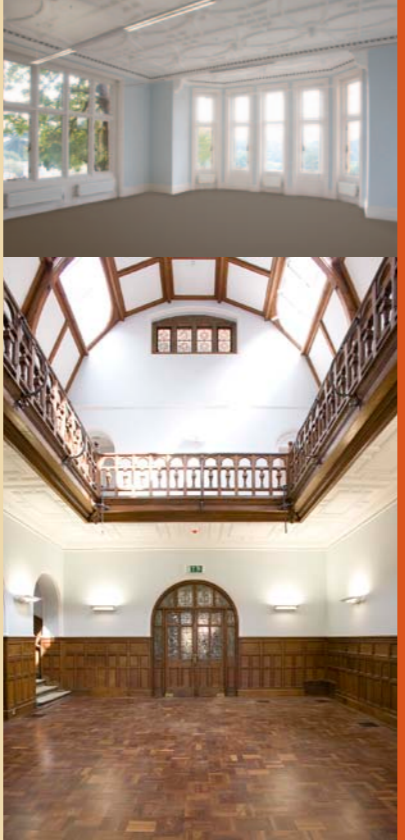
Springfield House is strategically located adjacent to a dedicated roundabout on the A229 Sandling Road, approximately half a mile north of Maidstone town centre and with direct dual carriageway access to Junction 6 M20, approximately one mile to the north. Springfield House is situated on the site of the former Kent County Council offices. Planning consent has been granted on the adjoining site for the construction of 280 luxury flats together with 140,000 sq.ft. of offices in 3 new buildings fronting Sandling Road.



The site enjoys views to the River Medway and Millennium Park which is accessible from a nearby footbridge.

DISTANCES

London	37 miles	(60km)	Chatham	7 miles	(11km)
Junction 6 M20	1 mile	(1.5km)	Sevenoaks	17 miles	(27km)
Junction 3 M2	4 miles	(6km)	Ashford	19 miles	(30km)



Awaiting Actual Image



www.springfieldmaidstone.co.uk

Call or email now to share the experience.



Owned & managed by



In association with Benchmark Realty Ltd.

Agents



nickthrelfall@watsonday.com

Disclaimer:- These particulars are set out as a general outline only, for the guidance of prospective purchasers or lessees and do not constitute the whole or any part of an offer or contracts. All descriptions, dimensions, references to conditions, necessary permissions for use and occupation and other details contained therein are given without responsibility and prospective purchasers or lessees must not rely on them as statements or representatives of fact and must satisfy themselves by inspection or otherwise as to the accuracy. Produced June 2013.



Maidstone ME14 2LP

Iconic. Unique. Connected.

FLEXI-LET OFFICE SUITES
Springfield House, Maidstone, Kent, ME14 2LP

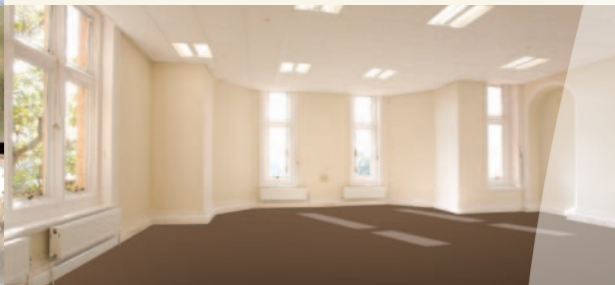
Occupiers include Global Sign, UBSN Kingfisher and NHS.



Springfield House, Maidstone

Flexi-Let space provides your business with:-

- Short term commitments from 1-5 years
- Monthly payments
- Costs include heat & power
- CAT 5 cabling and lift
- Lighting to LG7 specification
- On site car parking
- Use of prestige atrium and lift
- Kitchenettes and toilets on each level
- 24/7 Access
- Carpeting
- Use of landscaped grounds
- Quick access to M20, town centre & mainline station
- Archive storage also available on site
- Responsive building management

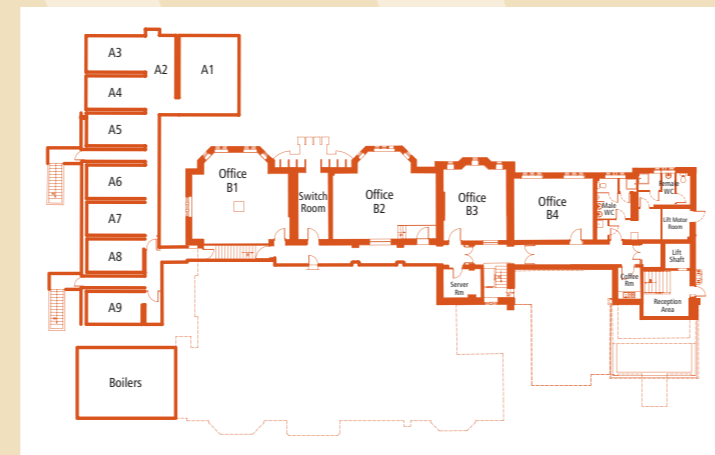


Floorplans

The fully restored building provides a choice of open plan and cellular offices available in a range of suite combinations – if your size requirement is not shown, please ask for a proposal.

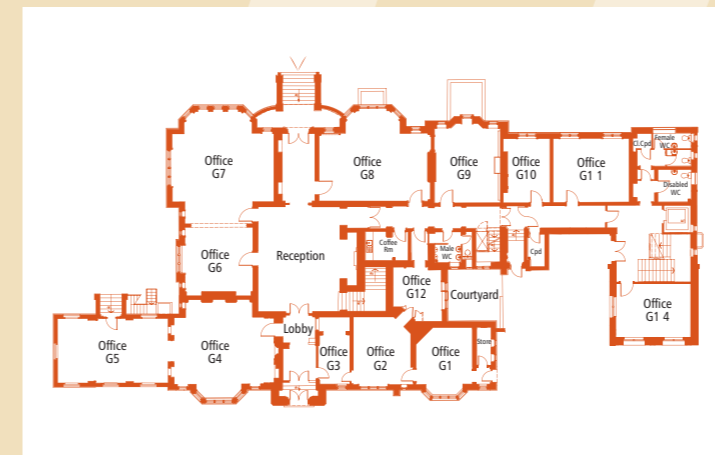
GARDEN LEVEL

B1	604 sq ft	A1	232 sq ft	A6	148 sq ft
B2	589 sq ft	A2	187 sq ft	A7	146 sq ft
B3	332 sq ft	A3	162 sq ft	A8	146 sq ft
B4	367 sq ft	A4	130 sq ft	A9	173 sq ft
		A5	145 sq ft		



GROUND FLOOR

G4/5	1,106 sq ft	G8/9	955 sq ft
G6/7	1,017 sq ft	G10/11	526 sq ft
G1/2/3/12	809 + 30 sq ft	G14	299 sq ft



Please refer to agents for availability update.

FIRST FLOOR

F1/2/3	548 sq ft	F9/10	577 sq ft
F4	1,090 sq ft	F11/12	595 sq ft
F5/6	851 sq ft		
F7/8	700 sq ft		



SECOND FLOOR

S1	474 sq ft	S2/S3	298 sq ft
S4	271 sq ft	S9	423 sq ft
S5/6	393 sq ft		
S7/8	344 sq ft		

